



PRODUCT CATALOGUE

Ankang Mano Instrument Co.,Ltd

www.manoinstrument.com

sales@manoinstrument.com

Whatsapp:+86 18729482322

Mobile:+86 18729482322

skype: chengshirly@hotmail.com





Ankang Mano Instrument Co., Ltd. is located in the beautiful Qinba hinterland Ankang City. we have a number of complete product lines. Professional management of pressure instruments, temperature instruments, pressure measurement and calibration equipment and pressure testing instruments, instrumentation valves, automated instrumentation equipment and other products. Our products are used in various industries such as petrochemical, electric energy, metallurgical machinery, bio–medicine, water heating, military aerospace, scientific research in universities, electronics and power, building technology, machinery manufacturing, metal processing, water treatment and other industries.

We follow the strategic plan of Made in China 2025 and the development trend of German Industry 4.0 in the future, strive for development with quality, and constantly improve our core competitiveness. We are determined to establish the company as a modern technology–based company.

We are full of hope and confidence, keeping pace with the times, wholeheartedly providing our customers with quality products and satisfied services, establishing long–term and stable business and trade partnerships, sincere cooperation and creating brilliant.

Product warranty service

Calibration Report Service

E–business Service

Sample service

Fast delivery service



01

Dry general pressure gauge

Applications.

- ☆ Application for pneumatic, heating industry, etc.
- ☆ Industrial process control and technical measurement.
- ☆ Measure the pressure and vacuum of liquid, gas or steam without explosion, crystallization, solidification and will not corrode to copper or copper alloy.

Features

- ☆ Indicating pressure gauge.
- ☆ High mechanical strength of pressure element.
- ☆ Simple installation and easy reading.
- ☆ Reliable and cost-effective.



Description

Model	Dry general pressure gauge
Nominal size	40mm, 50mm, 63mm, 100mm 150mm, 200mm, 250mm
Accuracy class	NS40, 50, 63: 2.5%; or NS63,100, 150: 1.5%
Scale ranges	From -1...0 to 0...600 bar or other equivalent units
Pressure Unit	Mpa psi bar kg/cm2 Kpa etc.
Dial	Aluminum, white
Pointer	Aluminum, black
Case and ring	Black steel
Movement	Copper alloy+ stainless iron
Window	Instrument glass
Protection degree	IP40
Thread size	☆ NS 40 50: M12*1.5 G1/8 NPT1/8 etc. ☆ NS 50 63: M14*1.5 G1/4 NPT1/4 etc. ☆ NS100 150: M20*1.5 G1/2 NPT1/2 etc.
Bourdon tube	Phosphor bronze bourdon tube C-type or helical type
Process connection	Brass; Lower mount or back mount or with flange or with clamp
Ambient temperature	-40 ... +70 ° C
Temperature influence	When temperature of the measuring system deviates from reference temperature (+20°C) max error ±0.4°C /10K of full-scale value.
Options	☆ Copper alloy only movement ☆ Customer's logo dial for OEM or ODM ☆ Inlay glass without ring type.

02

Gas pressure gauge

Oxygen pressure gauge, Acetylene pressure gauge,
Carbon dioxide pressure gauge, Propane pressure gauge

Applications.

- ☆ Measuring gas pressure, such as oxygen, carbon dioxide, acetylene, propane.
- ☆ Industrial process control and technical measurement.
- ☆ Measure the pressure and vacuum of liquid, gas or steam without explosion, crystallization, solidification and will not corrode to copper or copper alloy.

Features

- ☆ Oil forbidden.
- ☆ Indicating pressure gauge.
- ☆ High mechanical strength of pressure element.
- ☆ Simple installation and easy reading.
- ☆ Reliable and cost-effective.

Description

Model	Gas pressure gauge
Nominal size	40mm, 50mm, 63mm, 100mm, 150mm
Accuracy class	NS40, 50, 63: 2.5%; or NS63,100, 150: 1.5%
Scale ranges	From -1...0 to 0...600 bar or other equivalent units
Pressure Unit	Mpa psi bar kg/cm2 Kpa etc.
Dial	Aluminum, white
Pointer	Aluminum, black
Case	Steel
Movement	Copper alloy+ stainless iron
Window	Instrument glass
Protection degree	IP40
Thread size	☆ NS 40 50: M12*1.5 G1/8 NPT1/8 etc. ☆ NS 50 63: M14*1.5 G1/4 NPT1/4 etc. ☆ NS100 150: M20*1.5 G1/2 NPT1/2 etc.
Bourdon tube	Phosphor bronze bourdon tube C-type or helical type
Process connection	Brass; Lower mount or back mount or with flange
Ambient temperature	-40 ... +70 ° C
Temperature influence	When temperature of the measuring system deviates from reference temperature (+20°C) max error ± 0.4°C /10K of full-scale value.
Options	☆ Copper alloy only movement ☆ Customer's logo dial for OEM or ODM



03

Half ss pressure gauge (Oil fillable)

Applications.

- ☆ For gaseous and liquid media that are not highly viscous or crystallizing and will not attack copper alloy parts.
- ☆ Machine building and plant construction.
- ☆ For measuring medium with strong pulsation or pressure concussion.
- ☆ Process industry: metallurgical industry, power station, oil industry, chemical industry etc.

Features

- ☆ Vibration and shock-resistant; Durable and robust
- ☆ This gauge can measure the average value of the pulsing pressure of the gas or liquid, so that can avoid the damage caused by the strong pulsation and violent shock to ensure the measurement precision.

Description

Model	Half ss pressure gauge (Liquid fillable)
Nominal size	40mm, 50mm, 63mm, 100mm 150mm
Accuracy class	NS40, 50, 63: 2.5%; or NS63, 100 150: 1.5% or NS100, 150:1.0%
Scale ranges	From -1...0 to 0...600 bar or other equivalent units
Pressure Unit	Mpa psi bar kg/cm2 Kpa etc.
Dial	Aluminum, white
Pointer	Aluminum, black
Case	Stainless steel
Ring	☆ Bayonet ring, stainless steel for 63mm, 100mm, 150mm ☆ Crimped ring, stainless steel for 40mm, 50mm, 63mm, 100mm
Movement	Copper alloy
Window	Instrument glass
Protection degree	IP65
Thread size	☆ NS 40 50: M12*1.5 G1/8 NPT1/8 etc. ☆ NS 50 63: M14*1.5 G1/4 NPT1/4 etc. ☆ NS100 150: M20*1.5 G1/2 NPT1/2 etc.
Bourdon tube	Phosphor bronze bourdon tube C-type or helical type
Process connection	Brass; Lower mount (radial) or back mount (axial) or with flange
Filling liquid	Dry or Glycerin (Silicone for optional)
Permissible temperature	Ambient: -40 ... +70 °C without liquid filling; 5 ... +55 °C gauges with glycerin filling; -25...+55°C gauges with silicon filling.



04

All SS pressure gauge



Applications.

- ☆ Measure the pressure of medium in technological process which has higher requirements of corrosion-proof and anti-vibration.
- ☆ Process industry: widely used in oil industry, chemical/petrol-chemical industry, chemical fiber industry, metallurgical industry etc.

Features

- ☆ It has high measurement accuracy and long-term stability.
- ☆ Excellent load-cycle stability and shock resistance.

Description

Model	Stainless steel pressure gauge
Nominal size	40mm, 50mm, 63mm, 100mm 150mm, 250mm
Accuracy class	NS40, 50, 63: 2.5%; or NS63, 100 150: 1.5% or NS100, 150:1.0%
Scale ranges	From -1...0 to 0...600bar or other equivalent units
Pressure Unit	Mpa psi bar kg/cm2 Kpa etc.
Dial	Aluminum, white
Pointer	Aluminum, black
Case	Stainless steel 304 (316 or 316L for optional)
Ring	☆ Bayonet ring, stainless steel for 63mm, 100mm, 150mm ☆ Crimped ring, stainless steel for 40mm, 50mm, 63mm, 100mm
Movement	Stainless steel 304 (316 or 316L for optional)
Window	Safety glass
Protection degree	IP65
Thread size	☆ NS 40 50: M12*1.5 G1/8 NPT1/8 etc. ☆ NS 50 63: M14*1.5 G1/4 NPT1/4 etc. ☆ NS100 150: M20*1.5 G1/2 NPT1/2 etc.
Bourdon tube	Stainless steel 316 (304 or 316L for optional) C-type or helical type
Process connection	Stainless steel 304; (316 or 316L for optional) Lower mount (radial) or back mount (axial) or with flange
Filling liquid	Dry or Glycerin (Silicone for optional)
Permissible temperature	Ambient: -40 ... +70 °C without liquid filling; -20 ... +60 °C gauges with glycerin filling ; Medium: +200 °C maximum without liquid filling ; +100 °C maximum with liquid filling.
Temperature influence	When temperature of the measuring system deviates from reference temperature (+20°C) max error ± 0.4°C /10K of full-scale value.



05

Bayonet pressure gauge (Oil fillable)



Applications.

☆The bayonet pressure gauges are designed to measure excess and / or vacuum pressure of non-crystallizing, non-aggressive media (liquids, steam, gases) which will not attack to copper alloys.

Description

Model	Bayonet pressure gauge (Oil fillable)
Nominal size	100mm 150mm
Accuracy class	1.5% or 1.0%
Scale ranges	From -1...0 to 0...600 bar or other equivalent units
Pressure Unit	Mpa psi bar kg/cm2 Kpa etc.
Dial	Aluminum, white
Pointer	Aluminum, black
Case	☆Black painted steel (basic) ☆Stainless steel (optional)
Ring	☆bayonet steel, painted black (basic) ☆bayonet, stainless steel (optional)
Movement	Copper alloy
Window	☆for a steel case: technical (basic) ☆for a stainless case: organic (basic) ☆multi-layer safe (optional)
Protection degree	IP54
Thread size	M20*1.5 G1/2 NPT1/2 etc.
Bourdon tube	Copper alloy bourdon tube C-type or helical type
Process connection	Brass; Lower mount (Bottom) or back mount (back) or with flange
Connection square size	17mm
Filling liquid	Dry or Glycerin (Silicone for optional)
Permissible temperature	Ambient: -70 ... +60 ° C Medium: -50 ... +150 ° C
Operating measuring ranges	☆continuous load - 100% of the scale ☆variable load - 2/3 of the scale ☆short-term load - 110% of the scale

06

Capsule low pressure gauge

Applications.

- ☆ Measuring micro pressure and negative pressure.
- ☆ Boiler ventilation, gas piping, combustion equipment, etc. and other similar equipment.
- ☆ For gas without explosion and will not corrode to copper or copper alloy.

Features

- ☆ Capsule for pressure measurement element.

Description

Model	Capsule low pressure gauge
Nominal size	63mm, 100mm, 150mm
Accuracy class	☆ NS63, 100, 150: 2.5% ☆ NS100, 150: 1.5%
Scale ranges	Between -2...2 to -40...60 Kpa or other equivalent units
Pressure Unit	Kpa, mbar, mmH ₂ O, mmHg etc.
Dial	Aluminum, white
Pointer	Aluminum, black
Case	☆ Steel for 63mm, 100mm, 150mm ☆ Stainless steel for 100mm, 150mm
Ring	☆ Inlay glass without ring for 63mm ☆ Bayonet ring, for 100mm, 150mm
Movement	Stainless steel or brass
Capsule	Stainless steel or brass
Process connection	Stainless steel or brass Lower mount (radial) or back mount (axial)
Window	Instrument glass
Protection degree	IP40 or IP54
Thread size	☆ NS 50 63: M14*1.5 G1/4 NPT1/4 etc. ☆ NS100 150: M20*1.5 G1/2 NPT1/2 etc.
Permissible temperature	Ambient: -20 ... +60 ° C
Temperature influence	When temperature of the measuring system deviates from reference temperature (+20°C) max error ± 0.4°C /10K of full -scale value.
Humidity	Not more than 80%



07

Electric contact pressure gauge

Applications.

- ☆ Industrial process control and technical measurement, like oil industry, chemical industry and power station and usually is link with the electric equipment.
- ☆ Measure the pressure and vacuum of liquid, gas or steam without explosion, crystallization, solidification and will not corrode to copper or copper alloy.

Features

- ☆ Have the function of measuring and controlling.
- ☆ High mechanical strength of pressure element.
- ☆ Simple installation and easy reading.

Description

Model	Electric contact pressure gauge
Composition	Measuring system, case, indication equipment, electric contact device, adjustment device and junction box.
Nominal size	63mm, 100mm, 150mm
Contact power and maximal voltage	10VA (non-magnetic); 30VA (with magnetic) 220V D.C or 380V A.C
Maximal current	1A
Controlling type	Up limit and down limit
Accuracy class	NS63: 2.5%; or NS100 150: 1.5%
Scale ranges	From -1...0 to 0...600 bar or other equivalent units
Pressure Unit	Mpa psi bar kg/cm ² Kpa etc.
Dial	Aluminum, white
Pointer	Aluminum, black
Case and ring	Black steel
Window	Instrument glass
Protection degree	IP40
Thread size	☆ NS 50 63: M14*1.5 G1/4 NPT1/4 etc. ☆ NS100 150: M20*1.5 G1/2 NPT1/2 etc.
Bourdon tube	Phosphor bronze bourdon tube C-type or helical type
Process connection	Brass; Lower mount (radial) or back mount (axial) or with flange
Ambient temperature	-40 ... +70 ° C
Options	☆ Double up limit or double down limit ☆ Stainless steel type ☆ Half stainless steel type



08

Safety pressure gauge

Applications.

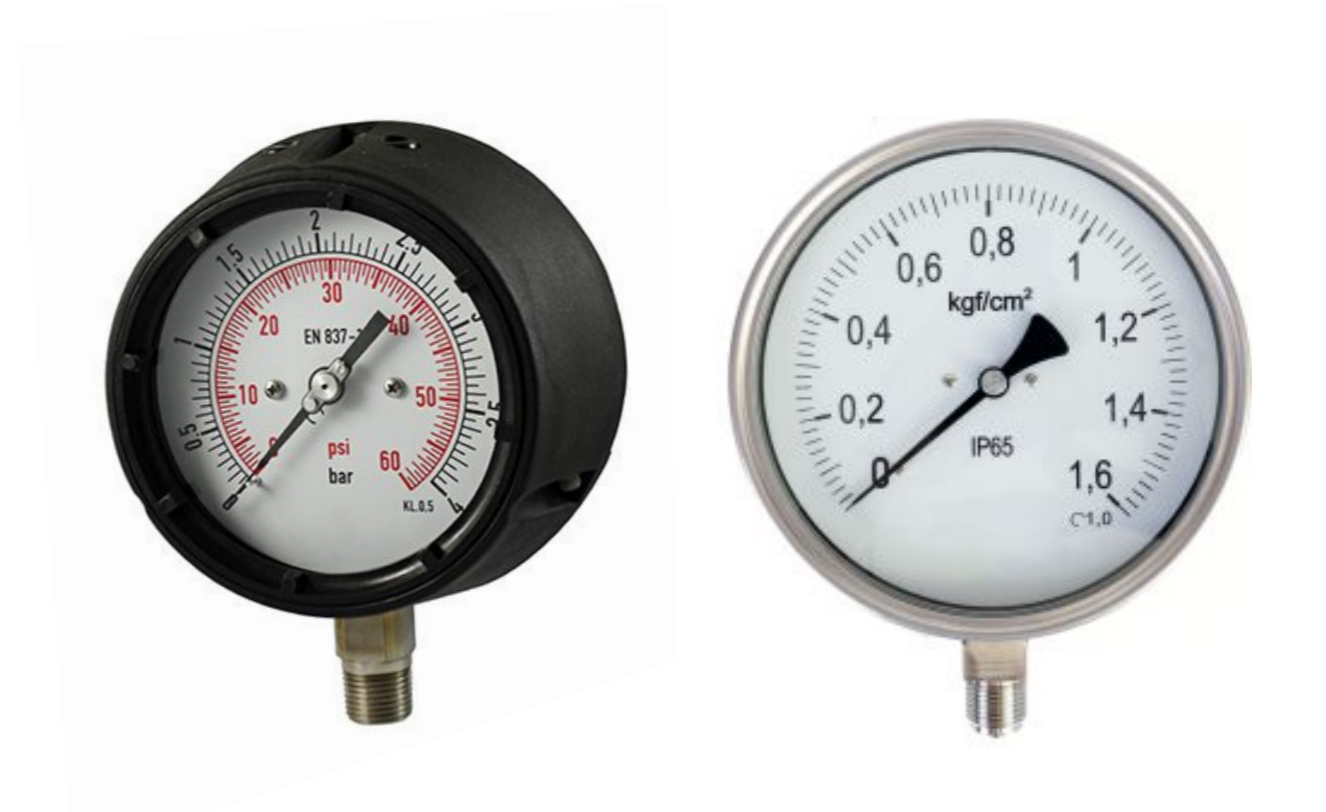
- ☆ Increased safety requirements for personal protection with solid baffle wall designed.
- ☆ With liquid-fillable case for applications with high dynamic pressure loads or vibrations.
- ☆ For gaseous and liquid aggressive media that are not highly viscous or crystallizing, also in aggressive ambience.
- ☆ Measure the pressure of medium in technological process which has higher requirements of corrosion-proof and anti-vibration.

Features

- ☆ Safety version with safety explosion-proof layer and safety pressure relief back cover.
- ☆ Excellent load-cycle stability and shock resistance.

Description

Model	Safety pressure gauge
Nominal size	100mm 150mm
Accuracy class	1.5% or 1.0%
Scale ranges	From -1...0 to 0...1000 bar or other equivalent units
Pressure Unit	Mpa psi bar kg/cm2 Kpa etc.
Dial	Aluminum, white
Pointer	Aluminum, black
Case	Pressure relief stainless steel 304 back cover case (316 or 316L for optional)
Ring	Bayonet
Movement	Stainless steel 304
Window	Laminated safety glass
Protection degree	IP65
Thread size	M20*1.5 G1/2 NPT1/2 etc.
Bourdon tube	Stainless steel 316 (316L for optional) C-type or helical type
Process connection	Stainless steel 304; (316 or 316L for optional) Lower mount (radial) or back mount (axial)
Filling liquid	Dry or Glycerin (Silicone for optional)
Permissible temperature	Ambient: -20 ... +60 ° C Medium: +100 ° C maximum
Temperature influence	When temperature of the measuring system deviates from reference temperature (+20°C) max error ± 0.4°C /10K of full-scale value.
Options	☆ Phenolic case



09

Precision measurement pressure gauge

Applications.

- ☆ Accurately measuring the pressure of all kinds of medium which noncorrosive, non-crystalline and non-condensing for copper alloys or steel alloys.
- ☆ Precision measurement in laboratories or workshop.
- ☆ High-accuracy pressure measurement.
- ☆ Testing and checking of industrial type pressure gauges.

Features

- ☆ With a mirror ring under the scale.
- ☆ Knife edge pointer for optimal accuracy of reading.
- ☆ High measurement accuracy and long-term stability.

Description

Model	Precision measurement pressure gauge
Nominal size	150mm
Accuracy class	0.6%; 0.4%; 0.25%
Scale ranges	From -1...0 to 0...600 bar or other equivalent units.
Pressure Unit	Mpa psi bar kg/cm2 Kpa etc.
Dial	Aluminum, white
Pointer	Aluminum, black
Case and ring	Aluminum
Window	Instrument glass
Protection degree	IP40
Thread size	M20*1.5 G1/2 NPT1/2 etc.
Process connection	brass Lower mount (radial) or back mount (axial) or back with flange.
Bourdon tube	Phosphor bronze chrome vanadium steel bourdon tube C-type or helical type
Permissible temperature	5~40° C
Temperature influence	Temperature of the measuring system deviates from reference temperature (20°C ± 2°C), additional error ≤0.4%/10° C should be considered.
Humidity	Not more than 80%
Options	☆ With zero adjustable setting. ☆ Shock resistance type with oil filled.



10

SS precision pressure gauge



Applications.

- ☆Oil industry,chemical industry,chemical fiber industry,metallurgical industry,power station and so on.
- ☆Precisely measure the pressure of medium which has high requirement of corrosion-proof.
- ☆High precision measurement in science laboratory and industrial production process.
- ☆Checking of industrial type pressure gauges.

Description

Model	SS precision pressure gauge
Nominal size	150mm
Accuracy class	0.6%; 0.4%; 0.25%
Scale ranges	From -1...0 to 0...600 bar or other equivalent units.
Pressure Unit	Mpa psi bar kg/cm2 Kpa etc.
Dial	Aluminum, white
Pointer	65Mo manganese,black
rubber	Anti-exploding slice
Case and ring	SS case+bayonet ring
Window	Instrument glass
Protection degree	IP65
Thread size	M20*1.5 G1/2 NPT1/2 etc.
Process connection	Stainless steel bottom,back
Bourdon tube	Stainless steel bourdon tube C-type or helical type

11

Diaphragm seal pressure gauge

Applications.

- ☆ For aggressive, contaminated.
- ☆ For adhesive, crystallizing, corrosive, highly viscous, or toxic media etc.
- ☆ Process industry: chemical and petrochemical industries, water treatment etc.

Features

- ☆ Process connection with diaphragm provides for the separation from the medium.
- ☆ Fill fluid inside the diaphragm seal system.

Description

Model	Diaphragm seal pressure gauge
Pressure gauge part:	
Nominal size	100mm 150mm
Accuracy class	1.5%
Scale ranges	☆ From -1...0 to 0...600 bar or other equivalent units. ☆ From -20~20Kpa to 0~40Kpa, or other equivalent units.
Pressure Unit	Mpa psi bar kg/cm2 Kpa etc.
Dial	Aluminum, white
Pointer	Aluminum, black
Case	Stainless steel 304 (316 or 316L for optional)
Ring	Bayonet or crimped
Movement	Stainless steel 304
Window	Instrument glass
Protection degree	IP65
Pressure gauge thread	M20*1.5 G1/2 NPT1/2 etc.
Bourdon tube	Stainless steel 304 (316 or 316L for optional) C-type or helical type
Filling liquid	Dry or Glycerin (Silicone for optional)
Diaphragm seal part:	
Diaphragm seal	☆ Thread connection: M20*1.5 G1/2 NPT1/2 etc. ☆ Flange connection: DN25 DN40 DN50 etc. ☆ Sanitary diaphragm seal.
Diaphragm seal material	Upper body: 316L Diaphragm: 316L (Alloy 20, with PTFE, Monel, Hastelloy C276 etc.) Wetted parts: 316L (Alloy 20, Alloy 625, Hastelloy C276 etc.)
Filling liquid	Silicone for optional



12

Ammonia pressure gauge

Applications.

- ☆ Measure the pressure and vacuum of media which is non-corrosive, non-crystalline and solidified to ordinary carbon steel, alloy structural steel, austenitic stainless steel and tin-lead alloy brazing material.
- ☆ Measure the pressure of ammonia liquid, gas or its mixture.
- ☆ Process of fertilizer production and refrigeration equipment use in ammonia.

Features

- ☆ Indicating pressure gauge.
- ☆ Steel connection for ammonia.
- ☆ High mechanical strength of pressure element.
- ☆ Simple installation and easy reading.



Description

Model	Ammonia pressure gauge
Nominal size	100mm, 150mm (40mm, 50mm, 63mm can also make)
Accuracy class	1.5%
Scale ranges	From -1...0 to 0...600 bar or other equivalent units
Pressure Unit	Mpa psi bar kg/cm2 Kpa etc.
Dial	Aluminum, white
Pointer	Aluminum, black
Case and ring	Black steel
Movement	Copper alloy+ stainless iron
Window	Instrument glass
Protection degree	IP40
Thread size	<ul style="list-style-type: none"> ☆ NS 40 50: M12*1.5 G1/8 NPT1/8 etc. ☆ NS 50 63: M14*1.5 G1/4 NPT1/4 etc. ☆ NS100 150: M20*1.5 G1/2 NPT1/2 etc.
Bourdon tube	C-type or helical type
Process connection	Steel; Lower mount or back mount
Ambient temperature	-40 ... +70 ° C
Temperature influence	When temperature of the measuring system deviates from reference temperature (+20°C) max error ± 0.4°C /10K of full-scale value.
Options	<ul style="list-style-type: none"> ☆ Diameter 40mm, 50mm, 63mm ☆ All stainless steel construction ☆ Customer's logo dial for OEM or ODM

13

Special pressure gauges

We provide a lot of special pressure gauges and customized pressure gauges.

Pressure gauge with red pointer on Mirror.



Differential pressure gauge



Hose pipe connector pressure gauge



Explosion proof electric contact pressure gauge



SF6 density gauge



14

Bimetal thermometer



Applications.

- ☆ Process instrumentation in machinery, chemical textile, medicine, foodstuffs, vessel for measuring and controlling the temperature.
- ☆ Widely used in the petrochemical and chemical industries, power generation, water and wastewater industries, oil and gas industries.
- ☆ Temperature measurement and testing for aggressive environments.

Features

- ☆ It has high measurement accuracy and long-term stability.
- ☆ Reset, zero adjustment for optional.
- ☆ All stainless-steel industrial construction for optional.
- ☆ Cost effective and easy installation.
- ☆ Scale ranges from $-60 \dots +600^{\circ} \text{C}$.

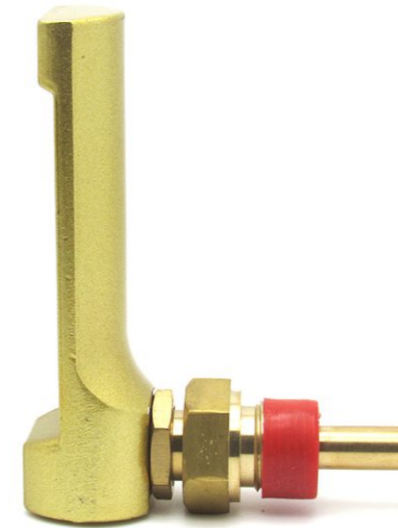
Description

Product name	Bi-metal thermometer
Measuring range	$-60 \sim 600^{\circ} \text{C}$ (Between this range, as customers requirements.)
Diameter	25mm 40mm 50mm 63mm 80mm 100mm 150mm (we also can make other size, when customers have requirements.)
Stem length	46mm 50mm 64mm 100mm 150mm 200mm 250mm 300mm 350mm or longer (we also can make other length, when customers have requirements)
Stem diameter(mm)	$\Phi 6 \ \Phi 8 \ \Phi 10$
Case Material	Stainless steel or Chrome steel
Ring	Stainless steel or Chrome steel
Stem Material	Brass or Stainless steel
Thermowell	Brass or Stainless steel or no thermowell
Thermowell thread	G1/2 (other thread is also allowed)
Stem thread	G1/2 G1/4 (other thread or no thread is also allowed)
Mounting type	Bottom/ Back/ Universal/ with needle/ with spring for pipe mounting
Lens	Glass
Dial	Aluminium-white
Pointer	Aluminium-black
Zero adjustment	With adjustment/ no adjustment
Accuracy	1.5% 2.5%

Special requirements from customers are acceptable.

15

Glass thermometer



Applications.

- ☆ For precision measurement and indicating negative and/ or positive temperature.
- ☆ Temperature measurement of universal application.
- ☆ Industrial applications in machine building, vessel construction, central and large heating systems, plant construction etc.

Features

- ☆ No mechanical wear.
- ☆ It has high measurement accuracy and long-term stability.
- ☆ Scale ranges from $-60 \dots +600^{\circ} \text{C}$.

Description

Model	Glass thermometer
Nominal size (upper body)	100mm 150mm 200mm
Stem length	30mm 36mm 40mm 50mm 63mm 100mm 150mm 200mm
Scale ranges	From $-60 \dots 0$ to $0 \dots 600^{\circ} \text{C}$ or other equivalent units and combined range.
Temperature Unit	$^{\circ} \text{C}$. Single scale
Case	Aluminum, brass-colored, anodized
Stem Material	Brass
Thread size	Male thread M18x1,5 - male thread G1/2 (other thread is allowed)
Measuring principle	Liquid expansion
Mounting type	Straight design, bottom mounting 90° angle version design, back mounting
Options	<ul style="list-style-type: none">☆ large angle version☆ Stem Material stainless steel☆ Scale range: Double scale; Special scale with other colors.☆ Customer's logo dial for OEM or ODM

16

Thermo-manometers Pressure and temperature measurement



Applications.

- ☆ For pressure and temperature measurement.
- ☆ Boiler and heating industry.

Features

- ☆ Combined indication for pressure and temperature.
- ☆ Case with check valve.
- ☆ Scale ranges to 0 ... 16 bar, 0 ... 160 ° C.

Description

Product name	Thermo-manometers
Measuring range	Pressure: 0 ... 0.1 to 0 ... 1.6 Mpa Temperature: 0 ... 100 to 0 ... 160 ° C
Diameter	80mm 100mm
Stem length	46mm 64mm 100mm (we also can make other length, when customers have requirements)
Case Material	Steel or Plastic
Wetted parts/ Measuring system	Brass-copper alloy
Thermowell	Brass
Thread size	M20*1.5 G1/2 NPT1/2 etc.
Mounting type	Bottom or Back
Lens	Glass
Dial	Aluminium-white
Pointer	Aluminium-black
Accuracy	2.5%
Design	Bimetal thermometer system and bourdon tube pressure system.

17

Capillary pressure thermometers

Applications.

- ☆ Widely used in machinery, textile, chemical, medicine, foodstuffs to temperature measuring and controlling.
- ☆ Widely used in the petrochemical and chemical industries, power generation, water and wastewater industries, oil and gas industries.
- ☆ Suitable for the measurement of liquids or gases at long distances in the production process.

Features

- ☆ With capillary.
- ☆ Different designs of connection and mounting.
- ☆ It has long-term stability.
- ☆ Scale ranges from $-60\cdots+600^{\circ}\text{C}$.

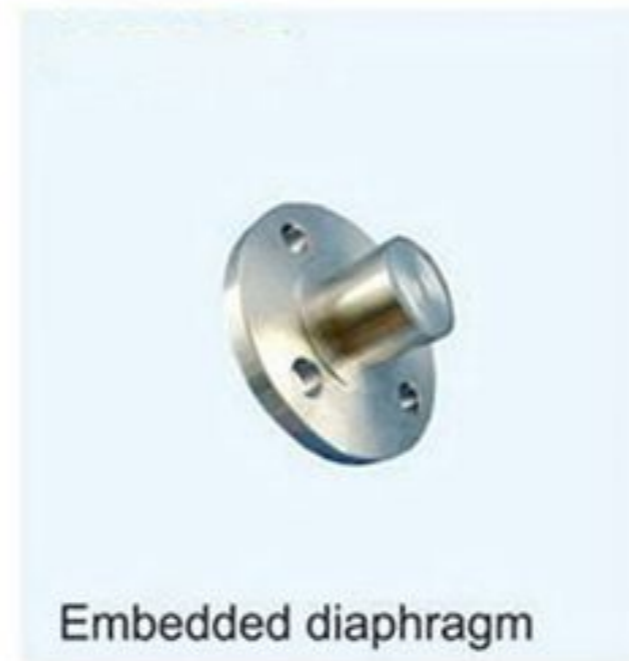
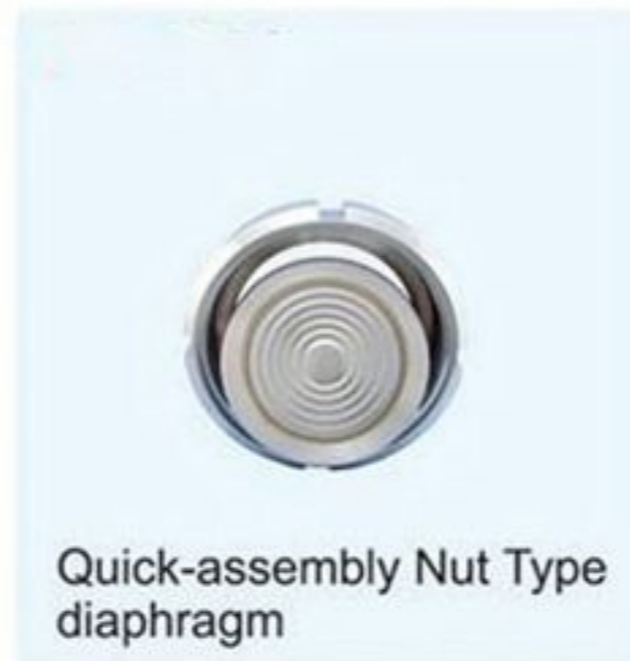
Description

Product name	Capillary Pressure thermometers
Measuring range	From $-60\cdots 0$ to $0\cdots 600^{\circ}\text{C}$ or other equivalent units and combined range.
Nominal size	100mm 150mm
Capillary length	3m 5m or customized
Stem diameter(mm)	$\Phi 6 \Phi 8 \Phi 10 \Phi 13 \Phi 14$
Stem length	150~330mm
Thread size	M20*1.5 G1/2 NPT1/2 M27*2 etc. (We can accept all kinds of thread from customers)
Thread type	☆ Fixed thread. ☆ with moveable thread, up and down.
Case Material	☆ Stainless steel ☆ Bakelite
Probe and thread Material	☆ Stainless steel ☆ Copper alloy
Capillary	☆ Stainless steel ☆ Copper alloy
Design	Capillary remote reading
Stem thread	G1/2 G1/4 (other thread or no thread is also allowed)
Mounting type	☆ Bottom mounting with back flange; ☆ Back mounting with back flange.
Dial	Aluminium-white
Pointer	Aluminium-black
Accuracy	2.5%

Special requirements from customers are acceptable.



18 Diaphragm seal



19

We supply a series accessories to connected with pressure gauges and thermometers.

No.1 Shut off valve/Needle valve



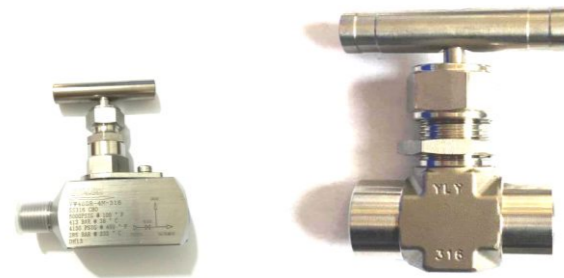
No.3 Three way brass valve



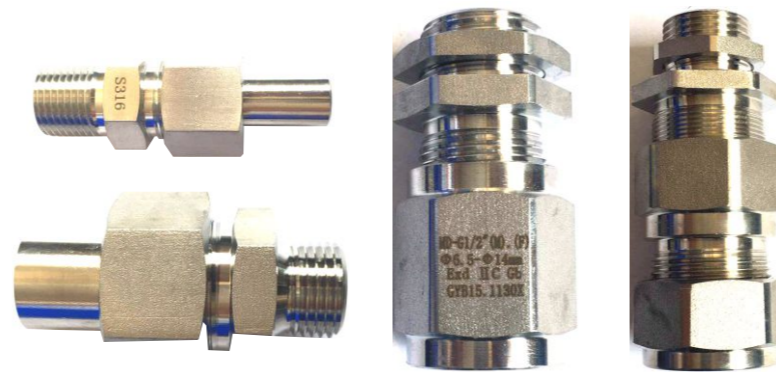
No.6 Syphon pipe



No.2 Ball valve



No.4 Welding connector



No.7 Thermowell/flange thermowell



No.5 Over-load protector

